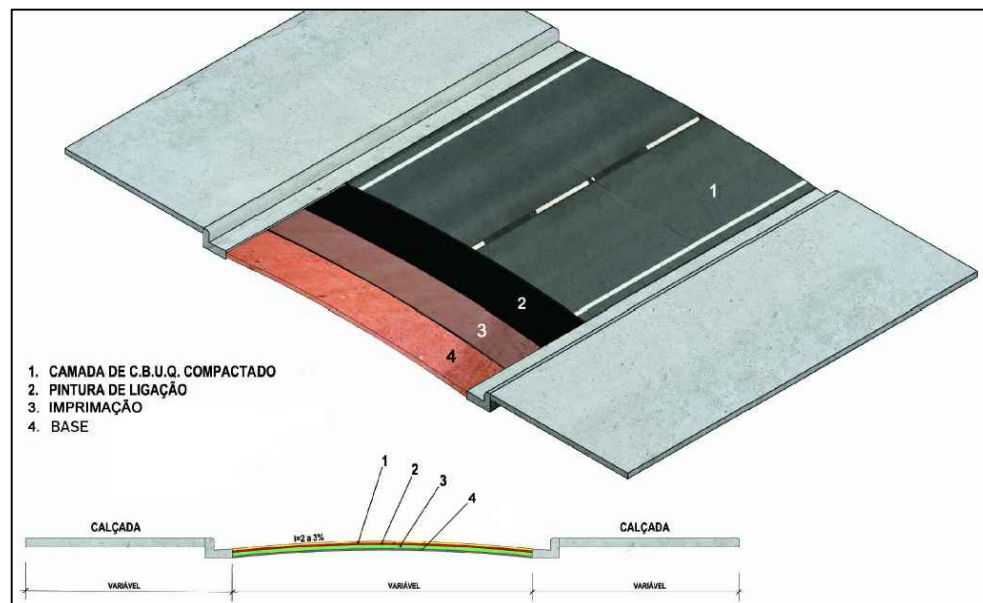
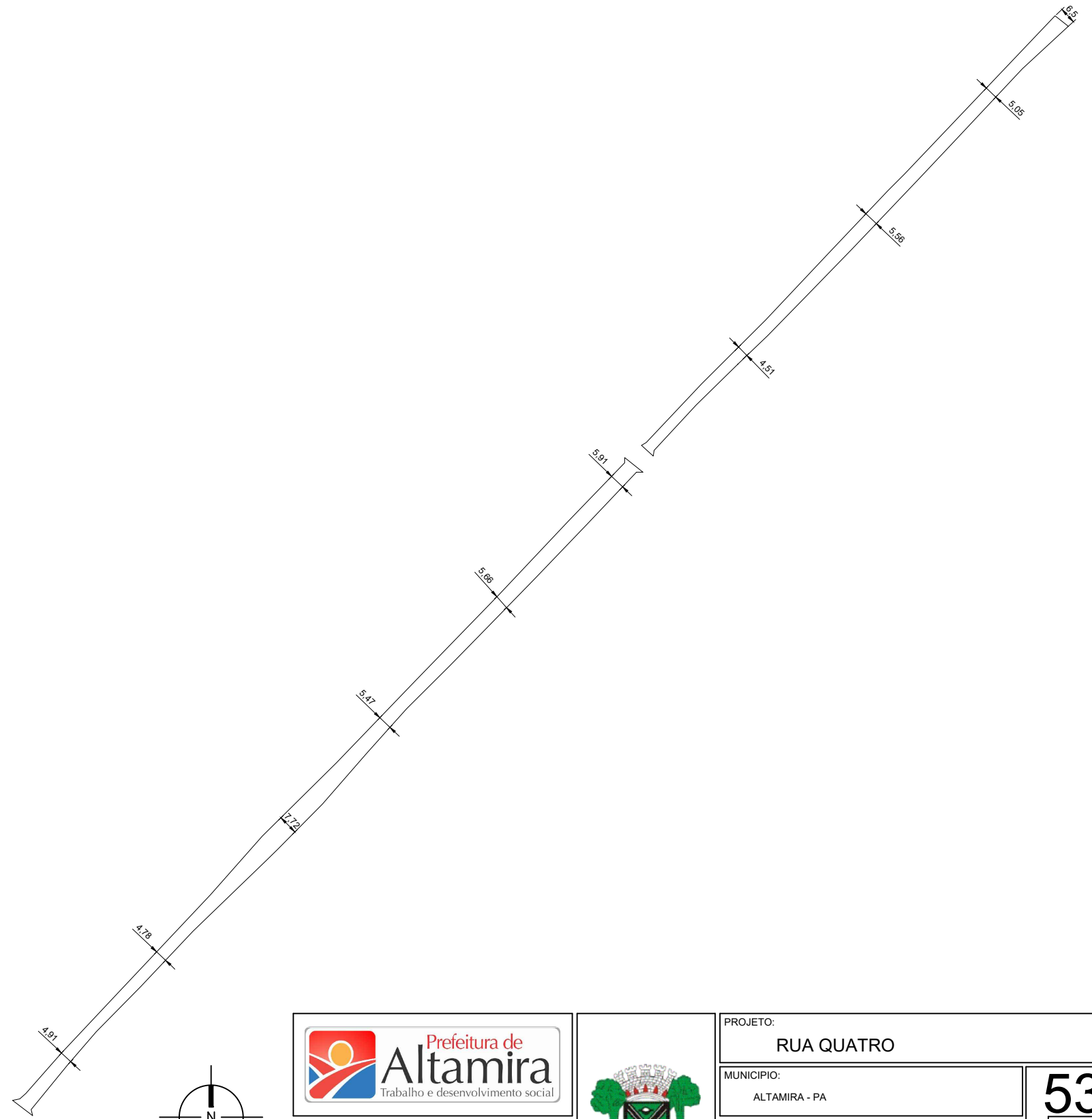





VIAS PARA PAVIMENTAÇÃO NA SEDE DO MUNICÍPIO DE ALTAMIRA - PA

ITEM	LOGRADOURO	BAIRRO	ÁREA (m ²)	PERÍMETRO (m)	EXTENSÃO (m)	LARG. MÉDIA (m)	ESPESSURA (m)	VOLUME DE CBUQ (m ³)	COORD. INICIAL	COORD. FINAL
53	RUA QUATRO	PAXÃO DE CRISTO	3.154,94	1.187,04	593,52	5,32	0,045	141,97	-3.184815°,-52.217839°	-3.181061°,-52.214274°



 Prefeitura de Altamira Trabalho e desenvolvimento social		PROJETO: RUA QUATRO
 SEPLAN Secretaria Municipal de Planejamento		MUNICIPIO: ALTAMIRA - PA
		53
		61
		PRANCHA: IMPLANTAÇÃO
		ESCALA: 1/2000
		DATA: 24/03/2020